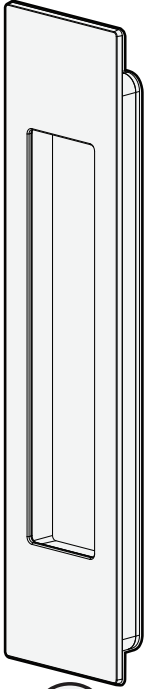


Contents Inside Package



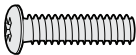
x1



x2
No. 6
3/4



x2



x2
M4x13
mm

Stainless Steel
Screws supplied by:



Please ensure you have received the correct goods before installation.

Mardeco International Ltd takes no responsibility for incorrect product being fitted.

Mardeco International Ltd retains the right to change products and specifications without notice.

Copyright © 2012
Mardeco International Ltd. All rights reserved.
For full Terms & Conditions please visit our website.

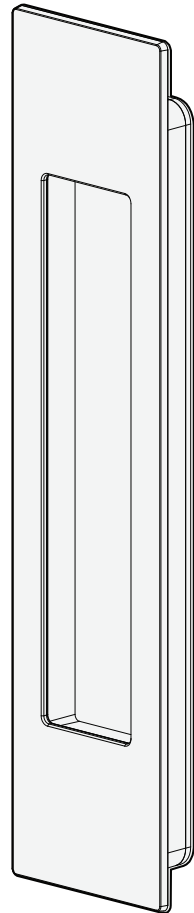
www.mardeco.co.nz

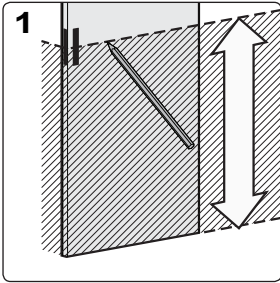


Scan QR code to view a step by step installation video

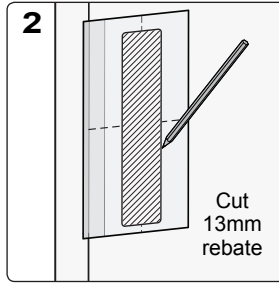


Flush Pull Installation Instructions

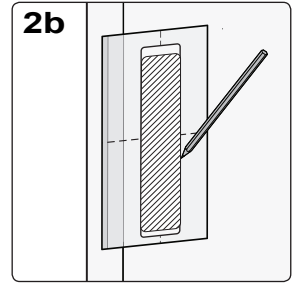




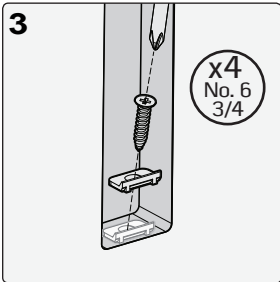
1
Mark midline on all 3 faces of the door. Choose a height that will be comfortable for all users to reach.



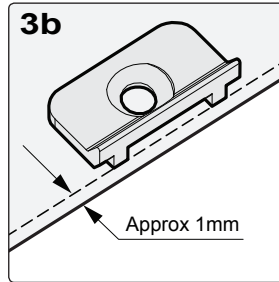
2
Wood Cutout: Remove middle section of flush pull template, position for desired backset and mark cutout outline. Use midline as height reference. Cut 13mm rebate



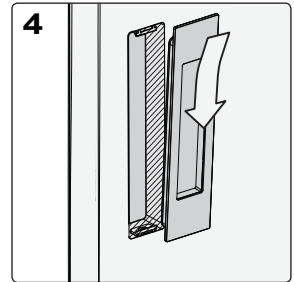
2b
Aluminium Cutout: Match midline with template midline and position for desired backset. Mark aluminium cutout outline. Cut through aluminium.



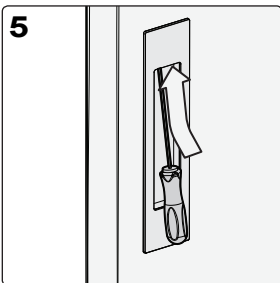
3
For wooden doors: install two woodfix brackets at top and bottom of cutout on both sides of the door.



3b
Fix brackets in centre of the cutout with the ridge facing outwards. Ensure that they are approx 1mm inside the edge and do not protrude.



4
Insert flush pull into cavity. Push in and down so it grips onto the bottom bracket or edge.



5
Use Mardeco hex tool to tighten grub screw inside top of flush pulls. Ensure they are fitted firmly.

Mardeco International Ltd.
PO Box 131
Whangaparaoa 0943
Auckland, New Zealand
Phone: +64 (0) 9 428 0658
Email: info@mardeco.co.nz
Web: www.mardeco.co.nz

mardeco[®]
international ltd
we handle the best